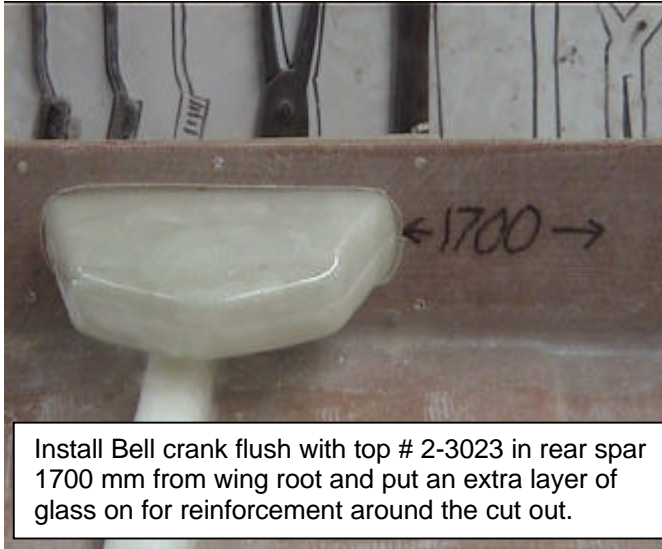


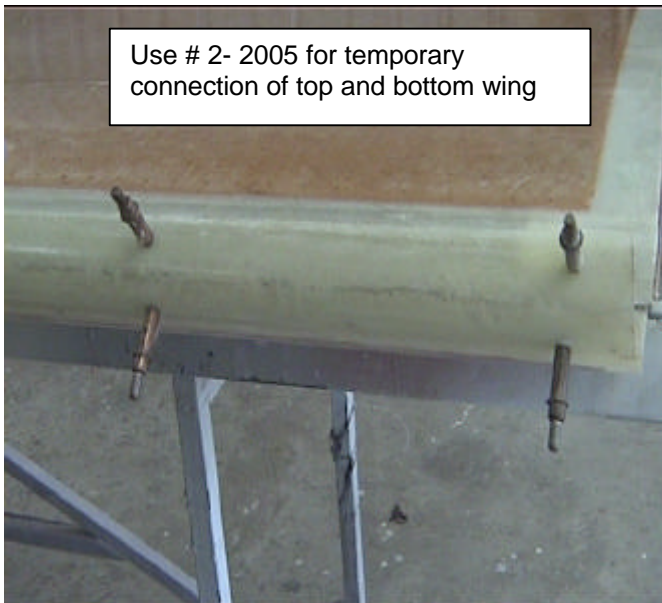
Wing Manual TERRIER 200



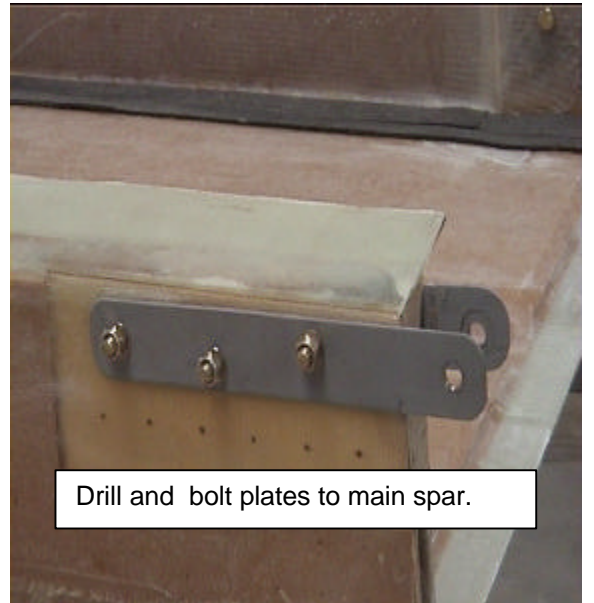
Install Bell crank flush with top # 2-3023 in rear spar 1700 mm from wing root and put an extra layer of glass on for reinforcement around the cut out.



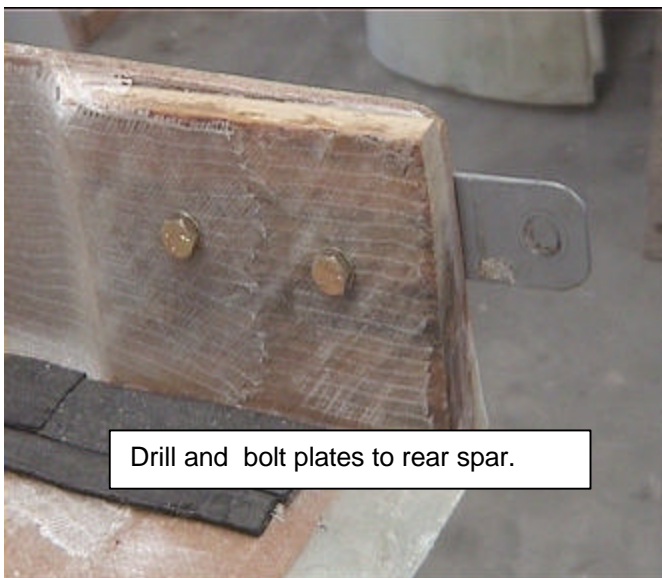
Put the top wing on and trim the wing root for a smooth fit against the fuselage



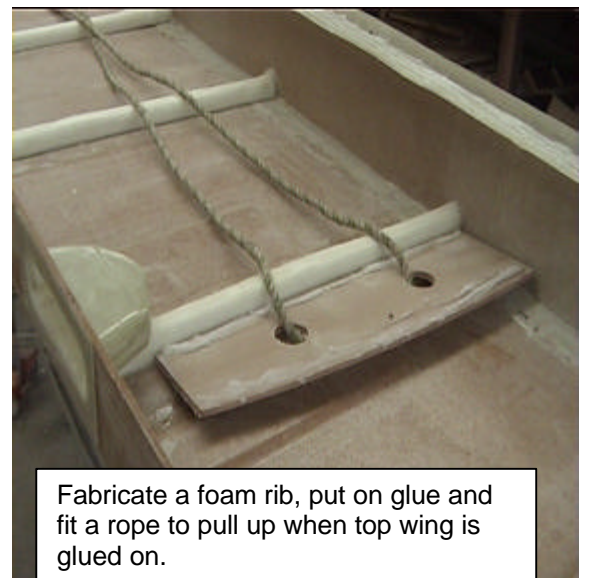
Use # 2- 2005 for temporary connection of top and bottom wing



Drill and bolt plates to main spar.



Drill and bolt plates to rear spar.



Fabricate a foam rib, put on glue and fit a rope to pull up when top wing is glued on.

© Copyright Foxcon Aviation Mackay

Wing Manual TERRIER 200	No: 022004
FoxCon Aviation Mackay, QLD.	Rev: 12 / 02
	Page: 4 of